



## MESSAGE FROM OUR ADMINISTRATION TEAM!

December is a very busy month! Be sure to check the monthly calendar on the website, as well as the classroom home notes, for all the upcoming events.



Thank you to everyone for attending our Parent Teachers Interviews last week. The weather certainly cooperated and the turnout was great! We would also like to thank our Parent Council members for organizing delicious food for our teachers on those evenings.

Our students are busy preparing for our upcoming Christmas Concert. Performances will be on December 19 and 20. Please refer to the schedule on the next page.

Online registrations for the 2024.2025 Pre-Kindergarten and Kindergarten classes will start early in the new year. Please watch for details! Birth Certificates are required for all registrations, so if you don't have one, it's a great time to order one. Click [here](#) for more information.

On behalf of myself and Mr. Brown, and all of our staff, we would like to take this opportunity to thank you for your continued support. We wish all of our Lochearn School families and friends a safe and happy Christmas and a relaxing holiday season! School resumes on Monday, January 8, 2024.

If you have any questions or concerns, please feel free to contact us by phone, 403.845.3721 or email [kathy.mcnutt@wrsd.ca](mailto:kathy.mcnutt@wrsd.ca) or [lucas.brown@wrsd.ca](mailto:lucas.brown@wrsd.ca).

---

5416 54 Street / Rocky Mountain House, AB / T4T 1S6

Phone: 403.845.3721

Safe Arrival: 1.855.756.2797

# Lochearn School

## CHRISTMAS FOOD DRIVE 2023

### Pre-K to Grade 5



**ITEMS FOR CHRISTMAS:**  
Candy Canes  
Chocolates  
Cranberry Sauce (canned)  
Hot Chocolate  
Stuffing (Stove Top)



**BASIC NEEDS:**  
Canned Fruit   Canned Soup   Boxed Cereal  
Coffee: Instant/Canned/Keurig  
Ketchup, Mayonnaise, Mustard, BBQ Sauce  
Jam/Jellies

**OTHER SPECIAL CONSIDERATIONS:**  
Gluten-Free Food   Toilet Paper   Toiletries   Laundry Supplies



## Last day Friday, December 15

Thank you for your donations!

---

## 🎄 CHRISTMAS CONCERT SCHEDULE 🎄

🎄 Tuesday, December 19 @ 12:00 noon for families of PreK, K2, grade 3 and 5.

🎄 Wednesday, December 20 @ 12:00 noon for families of K1, grades 1, 2 and 4.

*Please note the concert performance is the same on both dates; however, to accommodate seating due to our gym capacity, we ask parents to come on specific days.*

---



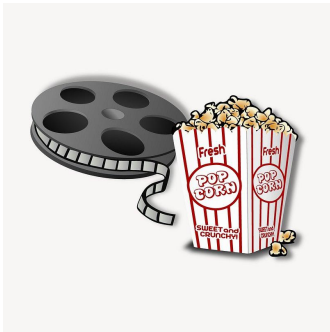
### SCHOOL SPIRIT



December 11 - 22

Wear Anything Christmas!

(sweaters, pj's, red/green, etc.)



## ✨ MARK YOUR CALENDARS ✨

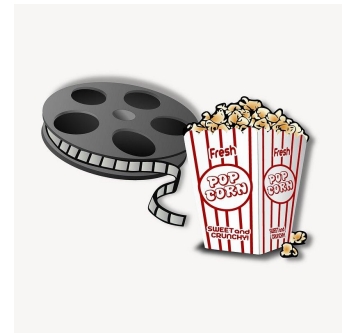
Friday, December 15

Family Christmas Movie Night

(sponsored by Friends of Lochearn)

Details to follow!

Students will vote on what movie will be shown!



---

Order milk for January from December 4 until December 17.

Online orders only through [SchoolCash](#). Sorry, no late orders accepted

---

# Thank You



## **WESTBRICK ENERGY LTD.**

**FOR THE GENEROUS DONATION TO OUR SCHOOL.  
YOUR CONTINUED SUPPORT IS APPRECIATED!**



### **GRADE 5 SKI TRIP - Friday, February 9, 2024**



The grade 5 ski trip to Canyon Ski Resort in Red Deer is booked for Friday, February 9, 2024. Information will be sent home on December 1 with forms and payment due by January 26, 2024. Payments are to be made on SchoolCash. Watch for an email notification when the fees have been assigned.

If you would like to supervise, all parents must have their Criminal Record check, complete with the vulnerable sector, current within three (3) years, on file at the school. If you have any questions, please contact the office.

✨ **FREE OUTDOOR ADVENT CALENDAR FOR FAMILY ACTIVITIES** ✨

Check out this [website](#) for a **FREE OUTDOOR ADVENT CALENDAR** from 1000 Hours Outside. Scroll to the bottom of the page and have a look at all the “Activities”! Looks like so much FUN!

**SCHOOL CASH ONLINE**

Wild Rose School Division offers School Cash Online as its preferred method of payment. If you are new to the school and have not registered, please click [here](#).

- ✨ Pre-Kindergarten Fees
- ✨ Field Trips
- ✨ Activity Fees
- ✨ Milk Program

**SKATING**

Our students will be skating in the new year! All students are required to have skates and a CSA approved helmet. The school does have a limited number of skates and helmets available for the students if required.

If you have skates or CSA approved helmets you would like to donate, please drop them off at the office.



K1	Monday - January 8, 15, 22, 29	11:45 - 12:45 pm
K2	Thursday - January 11, 18, 25, February 1	1:00 - 2:00 pm
Grade 1	Thursday - February 1, 8, 15, 29	2:00 - 3:00 pm
Grade 2	Wednesday - January 10, 17, 24, 31	2:00 - 3:00 pm
Grade 3	Wednesday - February 7, 14, 28, March 6	2:00 - 3:00 pm
Grade 4	Tuesday - March 5, 12, 19, TBA	2:00 - 3:00 pm
Grade 5	Tuesday - January 9, 16, 23, 30	2:00 - 3:00 pm

PLEASE REMEMBER TO LABEL YOUR CHILD'S BELONGINGS BEFORE THEY BRING THEM TO SCHOOL. YOU CAN USE CUSTOM MABEL'S LABELS (AN ONGOING FUNDRAISER FOR FRIENDS OF LOCHEARN) OR A PERMANENT MARKER AND WRITE THE INITIALS ON THE TAGS. PLEASE HELP US KEEP OUR LOST AND FOUND ITEMS TO A MINIMUM!

mabel's labels

Image: mabelslabels.ca

Remember to order Hot Lunch by the 20th of each month at

[HotLunches.Net](https://HotLunches.Net)

Haven't signed up yet? Click [here](#) for instructions!

Pre-Ordered Hot Lunch Days:

December 6 - Copper Creek

December 14 - Panago Pizza

Order by December 20 for January 2024!

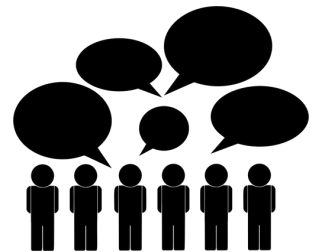
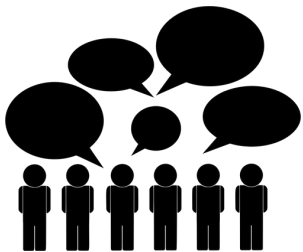
Parent Council / Friends of Lochearn

Fundraising Society

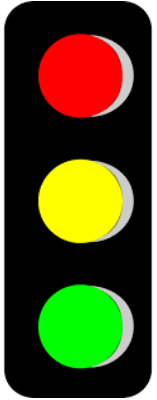
Next Meeting: Tuesday, January 16, 2024  
7:00 pm

Zoom link will be available . . . check our Facebook Page

Please note there is no meeting in December.



## INCLEMENT WEATHER



Dressing properly is key to staying warm and active during our Alberta winter. Parents and guardians can help our students be prepared by dressing them appropriately for our sudden weather changes. Please ensure your child has a toque, mitts and warm winter boots.

*Please note that outside activities are a regular part of our students' day.*

The following are indicators placed at the entrances for our students during inclement weather. *If there are no indicators on the doors, students are expected to play outside before school and during both recess breaks.*

***Please dress your children appropriately for all weather conditions.***

**RED (-25°C) Too cold (or wet) to be outside. Students will stay inside in their classrooms.**

**YELLOW (-19°C) Students may come inside and warm up in their entranceway.**

**GREEN – Normal Day - Students expected to dress for the weather and play outside.**

## STUDENT ATTENDANCE

If your child is absent or will be late for school, please connect with our Safe Arrival Line at 1.855.756.2797 or use [SchoolMessenger](#).

The Safe Arrival program allows parents/guardians to report their child's absence in advance, or before a cut-off time of 9:00 a.m. for the current day.

## USEFUL LINKS FOR PARENTS

Pre-Kindergarten Handbook, click [here](#)

Kindergarten Handbook, click [here](#)

Parent Handbook, click [here](#)



**PLEASE . . . Check out the Lost and Found items by our front entrance! It is currently overflowing!**

**VOLUNTEERS - Information Updated!**

Lochearn School loves volunteers and invites you to take an active role in volunteering at our school.

Requirements for Criminal Record Checks have changed. Kindly refer to the following information.

**★ CRIMINAL RECORD CHECK NOT REQUIRED:**

- Volunteer is only assisting with a single event
- Volunteer will not be working with students out of direct supervision of school staff
- Examples: helping with food preparation during a special event, assisting with prepping materials in the staffroom, attending a field trip for skating (tying skates) – always with the large group

**★ CRIMINAL RECORD CHECK REQUIRED:**

- Volunteer is assisting with multiple events, requiring multiple visits in the school
- Examples: assisting with hot lunch program every week/month, doing one on one site words in the hallway every Friday

**★ CRIMINAL RECORD CHECK (Including Vulnerable Sector Query)**

- Volunteer is working with individual or small groups of students on a regular basis without direct supervision
- Examples: coaching a team, attending an overnight trip or trip that is outside of school hours and they are responsible for students

How to apply: You must take two pieces of government issued identification, at least one must be a photo ID, showing you reside in the same community as the RCMP Detachment.

Cover letters are available from the office so there is no cost. *Please be advised there is a waiting period for the completion of this check. If you require further clarification, please contact the office.*



**NON-INSTRUCTIONAL (PD) DAYS FOR 2023.2024 – NO SCHOOL FOR STUDENTS**

- February 2
- February 22, 23 (Teacher’s Convention)
- March 8
- April 26
- May 17
- June 7
- June 27

**LOOK WHAT’S COMING UP NEXT MONTH . . .**

January 01	Happy New Year! 🇺🇸
January 01-05	Christmas Holiday
January 08	School Resumes
January 16	School Council Meeting, 7:00 pm
January 19	School Spirit - TBA Monthly Assembly, 12:15 pm
January 23-26	Dental Screening, K - grade 3
January 26	Grade 5 Ski Trip Forms/Payment due

*Dates are subject to change.*

To view the entire Parent Calendar for 2023.2024, click [here](#).